



Product information - Optima conference tables

A meeting or conference table is a face of you company. The unique thing about OPTIMA is the variety of detail and the options. The choice stands between a number of surfaces, which in combination with our big selection of cable hatches, wells and bases can create a completely distinctive style for your meeting facilities.

STANDARD COLORS

TABLETOP



Birch veneer



Beech veneer



Oak veneer



White-pigmented oak



Ash



White-pigmented ash



Mushroom linoleum 4176 DT



Ash linoleum 4132 DT



Pebble linoleum 4175 DT



Charcoal linoleum 4166 DT



White HPL



Grey HPL



Anthracite HPL



Beech HPL



Birch HPL



Ash HPL



Black matt Fenix

METAL LEGS



White



Black



Grey



Straight edge

or



Chamfered edge



Core material	MDF
Tabletop form	Rectangular, round or boat shape
Edge	10 mm straight edge with edging corresponding to the type of wood on the table. MDF with chamfered edge - the entire edge profile clear lacquered.
	The entire edge profile clear lacquered MDF.
	Edging corresponding to the table veneer.
	10 mm straight edge with ABS edging corresponding to the color of the table. Chamfered edge painted corresponding to the color of the table.
	10 mm straight edge with black ABS edging. Chamfered edge painted black.
	Edge with ABS edging corresponding to the color of the table.
Decor	Veneer structure follows tabletop lengthwise.
	Tabletops and hatches in white or grey are made with high pressure laminate.
Finishing	UV clear laquer on veneer.
Corners	Rectangular tabletop - 90 deg.
	Boat shape tabletop: R30
Thickness	26 mm
Legs	Metal legs: white (RAL 9010), grey (RAL 9006), black (RAL 9005)
	Columns: 70 mm diameter round or 70x70 mm square
Feet	Disc foot (diameter 600 mm, thickness 10 mm)
	Astro T-foot (700x80x28 mm)
	Cross foot (700x700x28 mm)
Table height	Fixed height: 55 cm, 74 cm, 90 cm, 110 cm
	Electrical legs: 70 - 120 cm (Astro square)



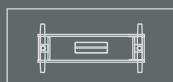
OPTIMA tabletops

ROUND



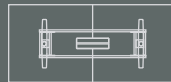
Ø 700/ 900/ 1200

RECTANGULAR (SINGLE PLATE)



L: 2000 - 3000

RECTANGULAR PLATE (2 PLATES CONNECTED)



L: 2400 - 3200

BOAT SHAPE (SINGLE PLATE)



L: 2000 - 3000

BOAT SHAPE (2 PLATES CONNECTED)



L: 2400 - 3200

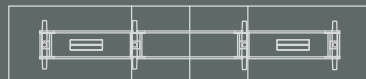


L: 3400 - 6000

RECTANGULAR (4 PLATES CONNECTED)



L: 3400 - 6000

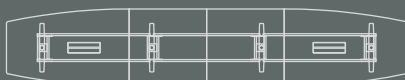


L: 4800 - 6000



L: 6200 - 7200

BOAT SHAPE (4 PLATES CONNECTED)



L: 4800 - 6000



L: 6200 - 7200

CABLE WELLS AND HATCHES



Our production is certified according to ISO 9001 and 14001. EPD is available. Our office in Norway has Miljøfyrtårn certificate.

OPTIMA is tested accordingly to these standards:

EN 12521; EN 15372
Surfaces EN 12720:2009+A1:2013; ISO 105-E04;
EN 12722:2009+A1:2013; SS 83 91 11; SS 83 91 20;
SS 83 91 22; SS 83 91 23; SIS 83 91 17; NS 8061;

Cleaning and maintenance

General

Svenheim uses materials and surfaces that are resistant. No special maintenance beyond normal is required cleaning. Recommended cleaning method is cloth soaked in slightly warm water with a mild synthetic detergent. Avoid green soap or substances containing ammonia. Do not use solvents or cleaning detergents with abrasive / scouring powder.

Powder coated steel components

Used for table base. Clean as under «general» suggestions. Difficult stains are removed with chemical gasoline. Do not use solvents or cleaners with abrasive / scouring powder. Installation instructions for base are enclosed.

Recycling

Sorting is a natural part of Svenheim's production and material handling. Steel components included in our products are 100% recyclable. Plates from Svenheim can be recycled as heat at approved heating systems. Plastic and metal is delivered to approved environmental stations. Svenheim is a member of the return schemes Green Dot Norway for packaging and Euroenvironment (Electrical return) for electrical components.

For orders and other questions please contact us at:

e-mail: post@svenheim.no; tel. +47 35 58 75 00 check our website www.svenheim.no

Ask for more detailed information about FSC® certified products

